

# OPTIMIZING YOUR FACTORY PRODUCTION



## MANAGE WITH EASE

Manufacturing managers oversee multiple factory sites and need to maintain precise temperature and humidity levels. MiSensors delivers real time data alerting you of a problem before it becomes a disaster. Our "set it, forget it" method allows you to have peace of mind while managing your facilities. In a factory there are several pieces of equipment that if temperature, humidity, or pressure rises, it can damage or destroy the equipment.

MISENSORS IS  
MORE THAN JUST  
A MONITORING  
SYSTEM

MiSensors

VISIT US AT  
[www.MiSensors.com](http://www.MiSensors.com)

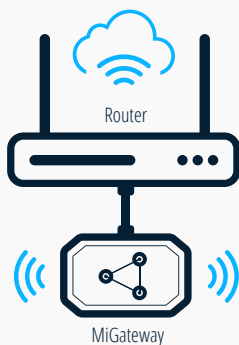
# MANUFACTURING INDUSTRY



MiSensors saves you time and money by giving you the right insight needed to be proactive instead of reactive. With MiSensors historical data reports you are easily able to keep track of and meet your industry's regulatory requirements. Building models with these records can be used to predict when certain components of a machine are likely to fail. Compact with a 3-axis MEMS- programmable vibration detection, MiTag can be mounted on equipment to detect abnormal operating conditions. It has precise readings with temperature accuracy of +/- 0.5 degrees and a range of -40 to 85°C, pressure accuracy of +/- 3%, with a +/- 1% hysteresis and a 300...1100 hpa range, humidity accuracy of ±3% relative humidity, with a ≤2% relative humidity hysteresis and a range of 0% - 100%. Equipped with an multi-function button to mount anywhere in your facility so workers can press it in case of emergencies. The proximity feature is used to mount on high value equipment and receive alerts when the sensor departs the operating range of the MiTag.

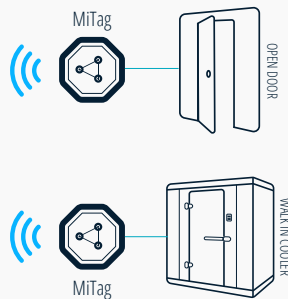
**SAVE UP TO 70% IN DEPLOYMENT COSTS  
COMPARED TO COMPETITORS**

## HOW IT WORKS



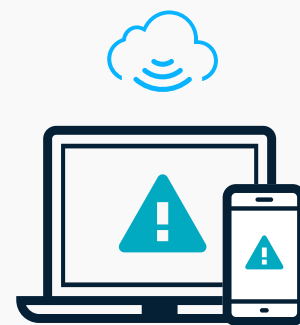
### Connect.

MiSensors Gateway connects to ANY Router, Switch or Cellular Gateway using a RJ45 cable to an Ethernet Port.



### Deploy.

Add any number of MiTag 8-in-1 Multi-sensor to your business environment.



### Monitor

View & Manage MiTag sensors with your very own white labeled cloud-based web and mobile applications.